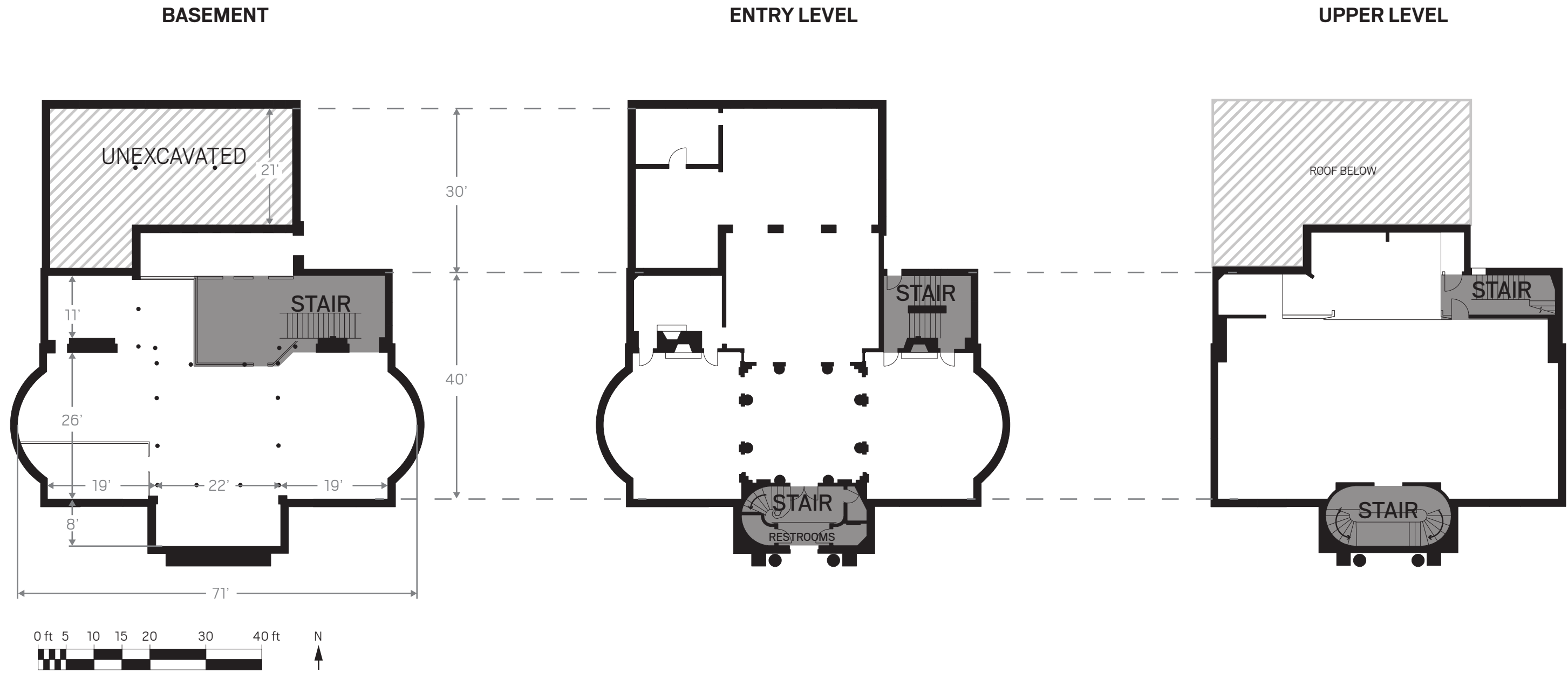


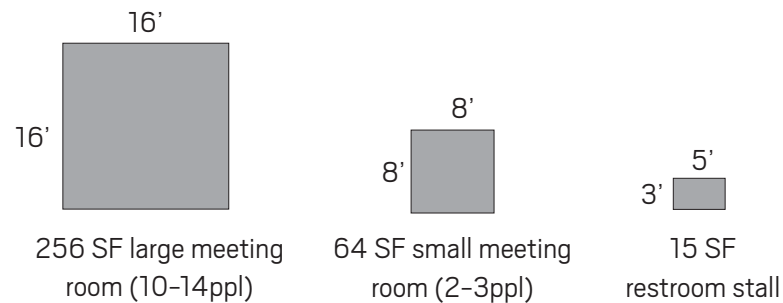
INSTRUCTIONS:

Sketch and label the layout of programs that you would want to see in a renovated Ramsdell Library in the floor plans below. You may refer to the guiding questions and list of popular library programs provided below, but you do not need to include all of the programs on the list. You may add your own program ideas as well.

You may include a single-level or multi-level addition to the building by drawing space that extends off of existing walls.



Additional scale references:



Program Spaces:

- Art Space
- Children's Room
- Community Living Room
- Community Workshop
- Gathering + Event Space
- Library of Things
- Local History Display
- Meeting Space
- Performance Space
- Quiet Reading
- Teen Area
- + feel free to add your own ideas

Guiding Questions

- Which programs are the most important for the community served by Randall Library?
- How many people would want to use a program space at one given time?
- Which programs should be next to each other? Which should not?
- Which programs should be the most visible as users move through the building?